

# The Fowler's Farm in Braintree



Cressing Road, Braintree, CM77 8DH

Telephone: 01376 551560

<http://www.vintageinn.co.uk/thefowlersfarmbraintree/>

## Keep in touch

If you appreciate thoughtful offers on the best seasonal food, wine & ales then why not consider becoming a friend of Vintage Inns. Once you join you'll receive a regular email newsletter that's full of exclusive subscriber-only offers, local events and news.

Your personal information is safe with our Privacy Promise and you can unsubscribe at any time.

<http://www.vintageinn.co.uk/thefowlersfarmbraintree/newsletter/>

# • CHILDREN'S MENU •

CHOOSE TWO COURSES AND A DRINK FOR £6.95

DRINKS INCLUDE: ORANGE FRUIT SHOOT,  
APPLE & BLACKCURRANT FRUIT SHOOT OR GLASS OF MILK

## • STARTERS •

*For hungry bears*

### TODAY'S SOUP

one of your five a day, served with crusty bread and butter (V)

### CHEESY GARLIC BREAD (V)

### PRAWN COCKTAIL

with crusty bread and butter

## • MAINS •

*Benji Bear's favourites (after honey, of course!)*

### TOMATO PASTA

penne pasta in a tomato sauce, served with garlic bread (V)

### CUMBERLAND SAUSAGE AND MASH

with peas and onion gravy

### RUMP STEAK

with tomato, onion rings, peas and chips (+£1 supplement)

### BATTERED COD LOIN AND CHIPS

with peas

### GRILLED SALMON

with mash, peas and tomato sauce

### BBQ CHICKEN

chargrilled chicken, smoked cheddar, sweetcure bacon and barbecue sauce, served with baby potatoes and seasonal vegetables

## • PUDDINGS •

*Because we know it isn't just Benji who has a sweet tooth...*

### ICE CREAM

choose two scoops from vanilla, chocolate or frozen yoghurt

### CHURROS

Spanish-style doughnuts tossed with cinnamon sugar, served with warm chocolate sauce

### ORANGE FLAVOUR JELLY

with mandarin pieces

ON SUNDAY, ROASTS ARE AVAILABLE FOR AN ADDITIONAL £1

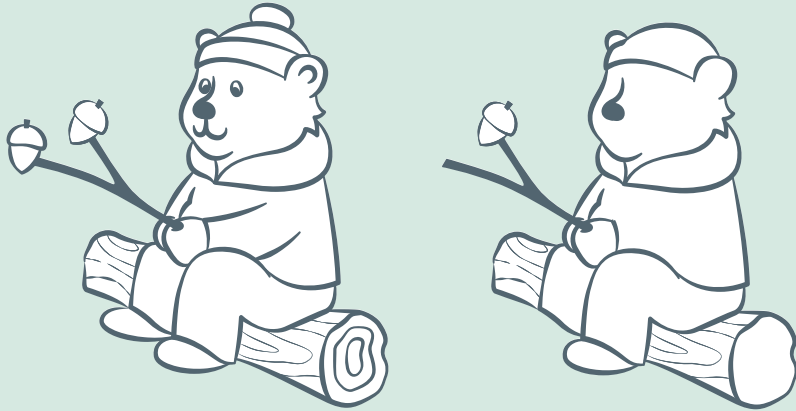


We serve food until 10pm from Monday to Saturday and until 9.30pm on Sunday. All prices include VAT at the current rate.  
All tips are retained by our team members. Some of our fish dishes may contain small bones. All our food is prepared in a kitchen where nuts, gluten and other allergens are present and our menu descriptions do not include all ingredients – if you have a food allergy, please let us know before ordering. Full allergen information is available, please ask a team member for details.



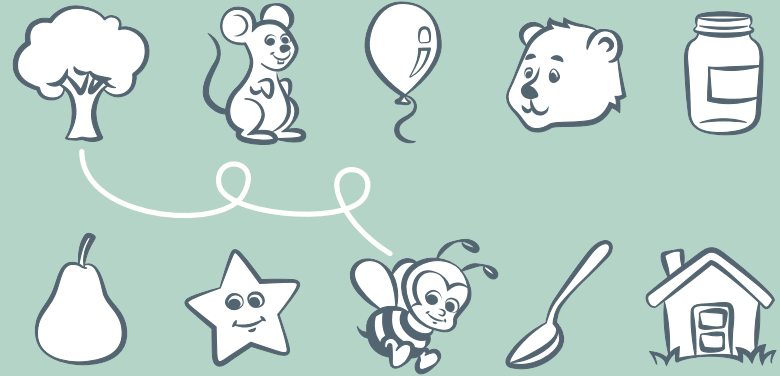
# FUN-TASTIC!

• Match me if you can •



Finish the drawing of Benji Bear so that both pictures match, then colour them in!

Play Benji's rhyming game and connect  
• the words that sound the same •



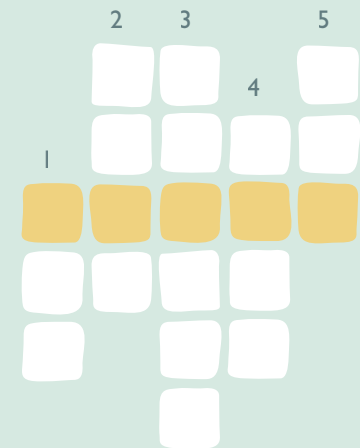
Draw a loopy line to link the words that rhyme.

• A very cosy colour-me-in •



Brrr, it's chilly outside! Colour in the dotted areas to help Benji find his winter woollies.

• Delightfully delicious crossword •



Name the pictures above to complete the crossword and reveal Benji's favourite food!